

## PRE-ORDER CLOTHING INSTRUCTIONS

0241Tactical is taking pre-orders for Field Strip Apparel (FROG Suit and RAID BDU styles).

To prevent cancellations and false claims, all custom orders must be prepaid by mail.

How to order:

1. On the pre-order page, pick item, pattern, size, and print, and fill out the order form. Please see available patterns and size chart below. Each piece pant or shirt is \$100.00 regardless of style or pattern – this figure accounts for the product and shipping.
2. Mail a cashier's check or money order made out to 0241TACTICAL with the completed order form to: 0241TACTICAL 629 MD CIR Hamilton, MT 59840
3. After we receive your mailed order, we'll send a confirmation email.

Orders are collected into batches and sent to the manufacturer on the 1st of each month.

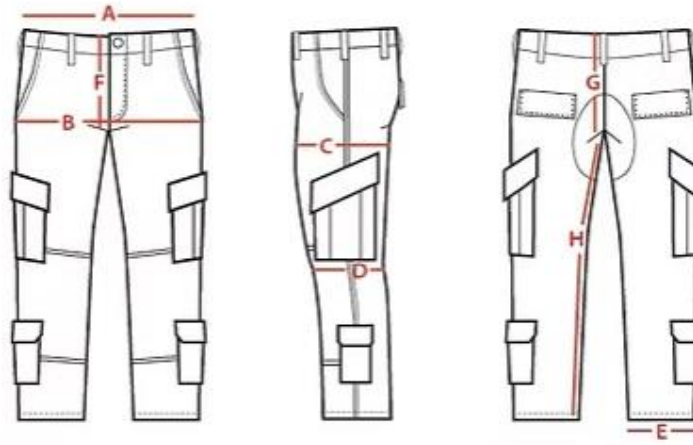
NOTE: RAID BDU Sizes – If you are borderline go to the next size up (ie – if borderline between Medium and Large, go with Large)

### Available Styles

OCP Style Shirts and Pants, FROG Suit Style Shirts and Pants, RAID BDU Style Shirts

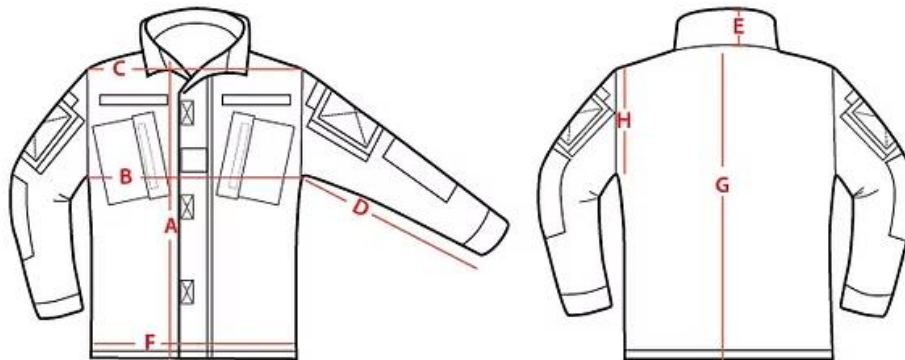
### Available Patterns/Colors:

- |                               |                          |
|-------------------------------|--------------------------|
| 1. BGS Sumpfmuster            | 22. Multicam             |
| 2. Black                      | 23. Multicam Black       |
| 3. Chocolate Chip             | 24. Multicam Tropic      |
| 4. Desert Tigerstripe         | 25. Multitarn            |
| 5. DPCU                       | 26. New Auscam AMCU      |
| 6. ERDL                       | 27. Night Desert         |
| 7. Flektarn                   | 28. Oak Leaf Autumn      |
| 8. German Splinter            | 29. Oak Leaf Spring      |
| 9. Greek Lizard               | 30. P1942 Frogskin Green |
| 10. KLMK White                | 31. P1942 Froskin Brown  |
| 11. KLMK Yellow               | 32. Ranger Green         |
| 12. M05 Finnish               | 33. Red Dawn             |
| 13. M25 Woodland              | 34. Rhodesian            |
| 14. M58 Flachentarn           | 35. SS-Leto              |
| 15. M70 Alpenflage            | 36. T-Block              |
| 16. M81 Woodland              | 37. Tarnanzug Neu        |
| 17. M90 Desert                | 38. Taz 16               |
| 18. M90 Woodland              | 39. Tibet-Tarn           |
| 19. MARPAT Desert Tigerstripe | 40. Tigerstripe Blue     |
| 20. MARPAT Tigerstripe        | 41. US4CES               |
| 21. Mitchell Leaf             |                          |



101243	SIZE	XS	S	M	L	XL	XXL	XXXL	XXXXL
A	1/2 Waist	13.75"	15.75"	17.75"	19.75"	21.75"	23.75"	25.75"	27.75"
B	Hip Width	19.5"	21.5"	23.5"	25.5"	27.5"	29.5"	31.5"	33.5"
C	1/2 Thigh Depth	13"	14"	15"	16"	17"	18"	19"	20"
D	1/2 Knee Depth	10.5"	11"	11.5"	12"	12.5"	13"	13.5"	14"
E	1/2 Cuff	8.5"	8.5"	8.75"	8.75"	9.25"	9.25"	9.75"	9.75"
F	Front Rise*	12"	12.5"	13"	13.5"	14"	14.5"	15"	15.5"
G	Back Rise*	16"	16.5"	17"	17.5"	18"	18.5"	19"	19.5"
H	Inseam	32.4"							

\* with Waist Band



101242	SIZE	XS	S	M	L	XL	XXL	XXXL	XXXXL
A	Body Length (front)	28.5"	29"	29.5"	30"	30.5"	31"	31.5"	32"
B	Chest Width	20.25"	22.25"	24.25"	26.25"	28.25"	30.25"	32.25"	34.25"
C	Shoulder Width	18"	19"	20"	21"	22"	23"	24"	25"
D	Sleeve Length	22.4"	22.6"	22.9"	23.1"	23.4"	23.6"	23.9"	24.1"
E	Collar Height	2"	2"	2"	2"	2"	2"	2"	2"
F	Hip Width	20.5"	22.5"	24.5"	26.5"	28.5"	30.5"	32.5"	34.5"
G	Body Length (back)	28.5"	29"	29.5"	30"	30.5"	31"	31.5"	32"
H	Arm Opening	10"	10.5"	11"	11.5"	12"	12.5"	13"	13.5"